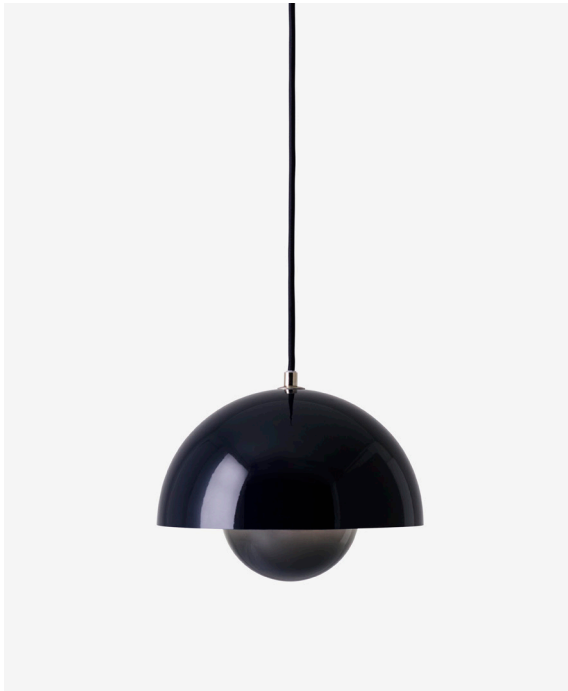




FLOWERPOT PENDANT ^{VP1}

BY VERNER PANTON
1968



FLOWERPOT PENDANT ^{VP1}

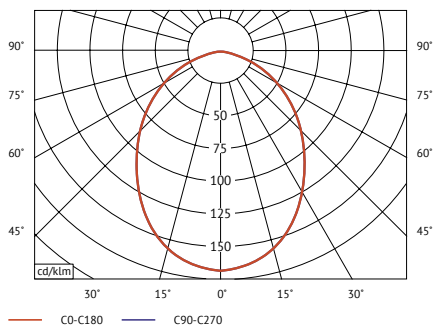
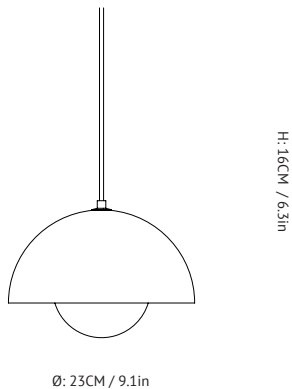
BY **VERNER PANTON**
1968

Amongst the prolific works of Verner Pantan, one of Denmark's most playful and provocative talents, the FlowerPot lamp stands out as a cultural emblem that captured the hearts and minds of an entire era. First launched in '68, the FlowerPot lamp became synonymous with the peace and love movement led by a generation in search of a more open, progressive mindset. Add to that a fascination with the future prompted by the race to outer space and you have the ideal framework for a visionary designer like Pantan, who was relentless in his own quest to challenge the status quo.

Captivated by fluid forms and a vast spectrum of vivid colours, Pantan designed this lamp to be more than a source of illumination. He went on to create entire interiors filled with furniture, saturated with psychedelic colours and accentuated with lamps appearing in repeated patterns as decorative details. From futuristic furniture fairs to exhibition spaces to museums of contemporary design, galleries and private collections, the FlowerPots continue to signify a singular formula for beauty and simplicity.

"Without a doubt, Pantan is one of the most daring designers of the 20th century," says &tradition Brand Manager Martin Kornbek Hansen. "What makes the FlowerPot lamp so iconic is that while it's reminiscent of the past, its global appeal truly transcends time. By introducing a new colour scheme, we catapult the lamp into a contemporary landscape, appealing to new audiences who see design as an imperative that adds an extra dimension to their lives."

Pantan himself summed it up when he said "The main purpose of my work is to provoke people into using their imagination and to make their surroundings more exciting." We couldn't agree more.



Photometric data file (LDT or IES) available upon request.

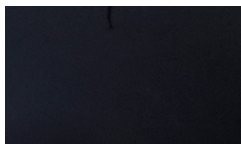
Product type	Pendant.
Production Process	The two shades are made from deep drawn metal.
Environment	Indoor.
Dimensions (cm / in)	Ø: 23cm/9.1in, H: 16cm/6.3in.
Weight (kg)	0.95 kg.
Materials	Lacquered metal with 3 meter fabric cord.
Colours	Beige red, Black blue, Mustard, Deep red, Grey beige, Dark green, White, Polished brass, Polished stainless steel, Polished copper, Matt black, Matt light grey, Matt white.
Voltage (V)	220-240V - 50Hz.
Light Source & Energi efficiency class	E27 Max 40 Watt. The luminaire is compatible with bulbs of the energy classes: A++ - E. Bulb is not included.
Certifications	CE, IP20, Class II.
Canopy	Included.
Cord lenght / diameter (cm / in)	300cm/118.1in.
Cleaning Instructions	Clean with soft dry cloth. Always switch off the electricity supply before cleaning.
Package Dimensions (cm / in)	H: 15.0cm/5.9in x W: 24.5cm/9.6in x D: 25.0cm/9.8in.

&tradition[®]

PRODUCT



COLOR

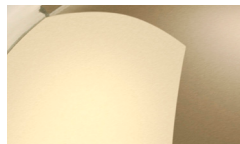


Black blue

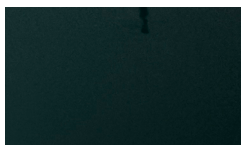
PRODUCT



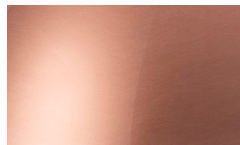
COLOR



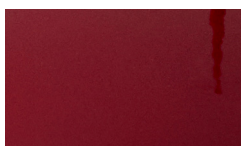
Polished brass



Dark green



Polished copper



Deep red



Polished steel



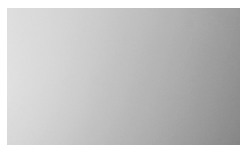
Beige red



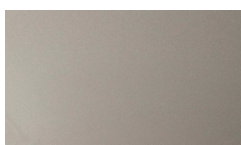
Matt black



Mustard



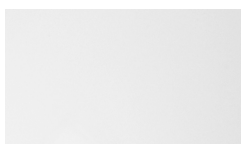
Matt light grey



Grey beige



Matt white



White